



Roxtec SPM™ seal

Seal for metal pipes for use when welding is not allowed, recommended or desired.

The Roxtec SPM™ seal is a light-weight non-weld solution for single metal pipe entries. The transit is flexible towards pipe sizes as well as to uneven openings. The pipe seal is installed directly into structures without welding and has indicators showing when full compression is achieved.



- Light-weight
- Quick and easy to install
- Easy to maintain and inspect

Product characteristics



Fire rated



Watertight



Gas-tight

Structure of installation



Metal

Mounting type



Existing hole

Ratings & certificates

Fire

- A-CLASS according to IMO 2010 FTP Code

Tightness

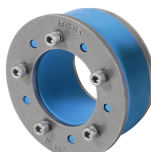
- Gas: 0.67 bar (catastrophic)
- Water: 1 bar (catastrophic)

Sealing components

Sealing components



Lubricant



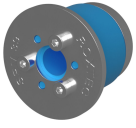
SPM™ seal

For detailed information, please visit [roxtec.com](https://www.roxtec.com).

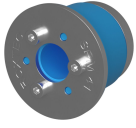


Pre-configured transit kits

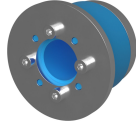
mm/kg



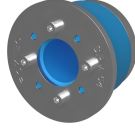
SPM 39



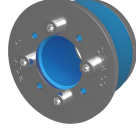
SPM 41



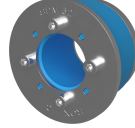
SPM 48



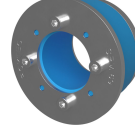
SPM 54



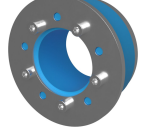
SPM 59



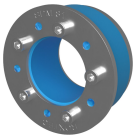
SPM 62



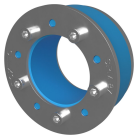
SPM 69



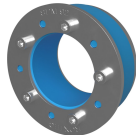
SPM 77



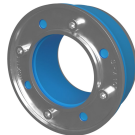
SPM 81



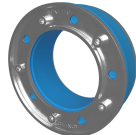
SPM 87



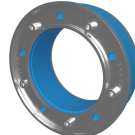
SPM 92



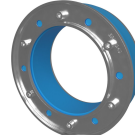
SPM 103



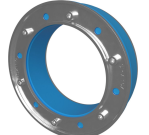
SPM 119



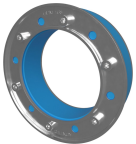
SPM 138



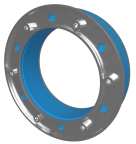
SPM 149



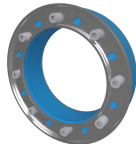
SPM 157



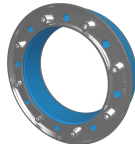
SPM 168



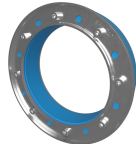
SPM 178



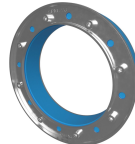
SPM 188



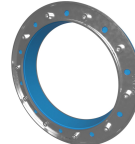
SPM 196



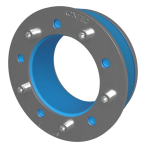
SPM 217



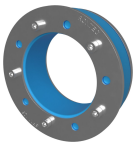
SPM 226



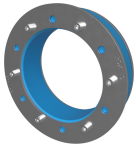
SPM 279



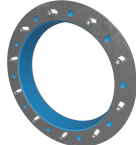
SPM 110



SPM 125



SPM 153



SPM 266



Product	Configuration	Aperture dimensions Ø	Weight	Art. no
SPM 39	1x (8.0-12.0)	39 - 43	0.14	167591
SPM 41	1x (12.0-16.0)	41 - 45	0.14	153052
SPM 48	1x (16.0-20.0)	48 - 52	0.2	167592
SPM 54	1x (19.0-23.0)	53.5 - 57.5	0.25	153060
SPM 59	1x (24.0-28.0)	58.5 - 62.5	0.3	153064
SPM 62	1x (27.0-31.0)	61.5 - 65.5	0.32	153068
SPM 69	1x (32.0-36.0)	68.5 - 72.5	0.37	153072
SPM 77	1x (37.0-42.0)	77 - 81	0.47	166011
SPM 81	1x (41.4-45.4)	81 - 85	0.45	153040
SPM 87	1x (47.0-51.0)	87 - 91	0.5	153076
SPM 92	1x (52.0-56.0)	92 - 96	0.5	153080
SPM 103	1x (56.2-61.1)	103 - 107	0.7	153084
SPM 119	1x (72.2-76.9)	119 - 123	0.8	153088
SPM 138	1x (88.0-92.0)	138 - 142	1.2	153056
SPM 149	1x (99.0-103.0)	149 - 153	1.2	167594
SPM 157	1x (107.0-111.0)	157 - 161	1.2	153092
SPM 168	1x (113.0-117.0)	168 - 172	1.6	153096
SPM 178	1x (123.0-127.0)	178 - 182	1.7	167595
SPM 188	1x (131.0-135.0)	188 - 192	1.9	167596
SPM 196	1x (138.5-143.0)	196 - 200	1.9	153100
SPM 217	1x (157.0-162.0)	217 - 221	2.3	167597
SPM 226	1x (167.0-171.0)	226 - 230	2.4	153104
SPM 279	1x (218.0-222.0)	279 - 283	3.3	153036
SPM 110	1x (65.0-69.0)	110 - 114	0.7	206104
SPM 125	1x (77.0-81.0)	125 - 129	0.9	206108
SPM 153	1x (103.0-107.0)	153 - 157	1.2	206112
SPM 266	1x (206.0-210.0)	266 - 270	2.9	206124

The product information provided by Roxtec does not release the purchaser of the Roxtec system, or part thereof, from the obligation to independently determine the suitability of the products for the intended process, installation and/or use.

Roxtec gives no guarantee for the Roxtec system or any part thereof and assumes no liability for any loss or damage whatsoever, whether direct, indirect, consequential, loss of profit or otherwise, occurred or caused by the Roxtec systems or installations containing components not manufactured by an authorized manufacturer and/or occurred or caused by the use of the Roxtec system in a manner or for an application other than for which the Roxtec system was designed or intended.

Roxtec expressly excludes any implied warranties of merchantability and fitness for a particular purpose and all other express or implied representations and warranties provided by statute or common law. User determines suitability of the Roxtec system for intended use and assumes all risk and liability in connection therewith. In no event shall Roxtec be liable for indirect, consequential, punitive, special, exemplary or incidental damages or losses.

The Roxtec products are offered and sold in accordance with the conditions of the Roxtec General Terms of Sales. The latest version of the Roxtec General Terms of Sales can be downloaded from <https://www.roxtec.com/en/about-us/about-roxtec/general-terms-of-sales/>

We reserve the right to make changes to the product and technical information without further notice. Any errors in print or entry are no claims for indemnity. The content of this publication is the property of Roxtec International AB and is protected by copyright.

This document was generated on: 2024-04-27